

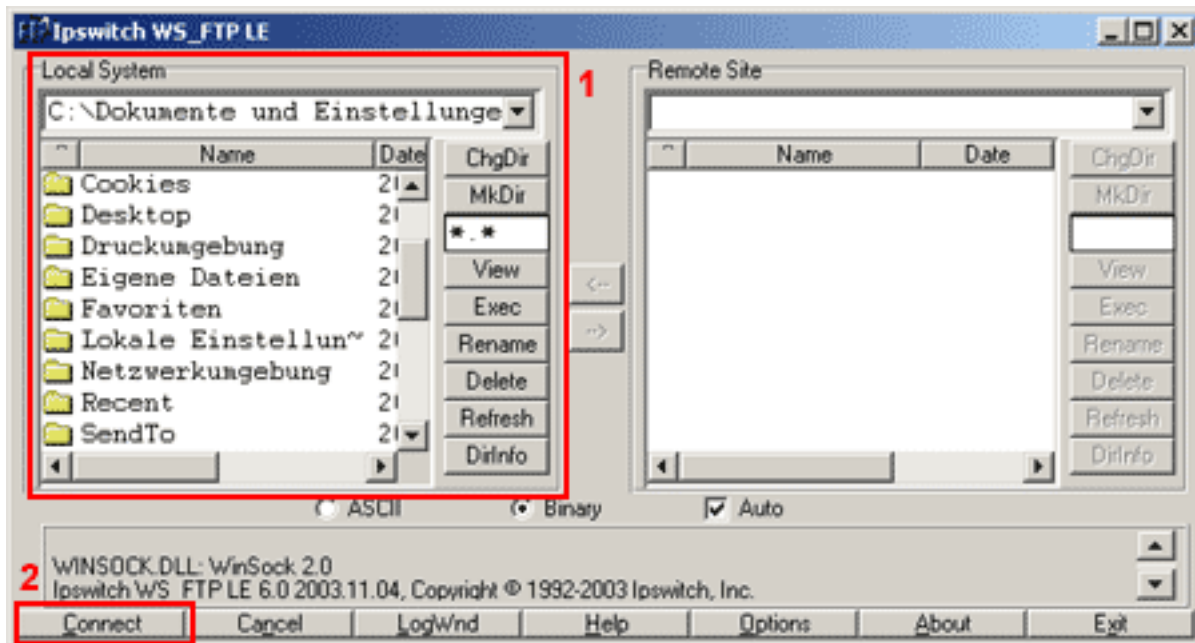
Einrichtung FTP-Upload

How do I set up the FTP upload via WS_FTP LE ?

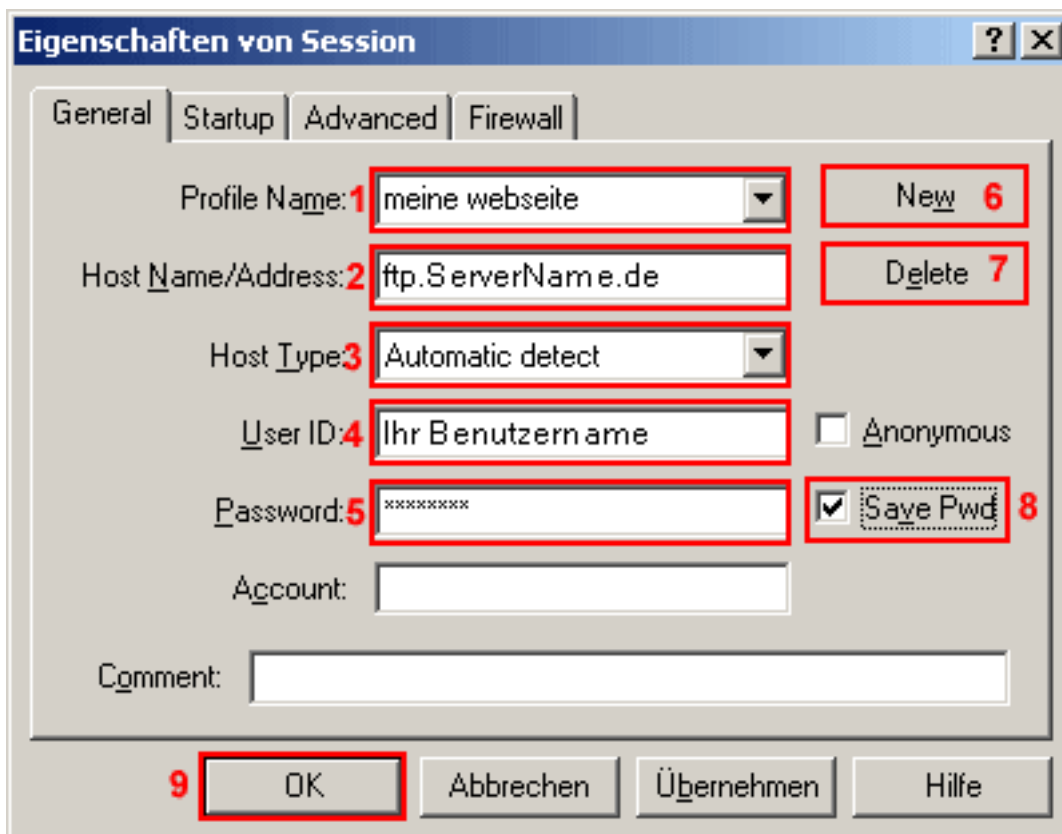
WS_FTP LE

After starting WS_FTP you can see the folders and files of your computer on the **left(1)**.

Click "**Connect**" (2) to establish a connection with another server in the Internet.



After that the following window opens up.



Einrichtung FTP-Upload

In the field "**Profile Name**" (1) several preset FTP connecton data can be found (referred to as "profiles").

Click "**New**" (6) to create a new profile.

Enter a freely selectable name into the field "**Profile Name**" (1).

You can delete a profile by clicking the "**Delete**" (7) button.

In the field "**Host Name/Address**" (2) enter "**ftp.ServerName.de**".

In the field "**Host Type**" (3) leave the preset "**Automatic Detect**" selected.

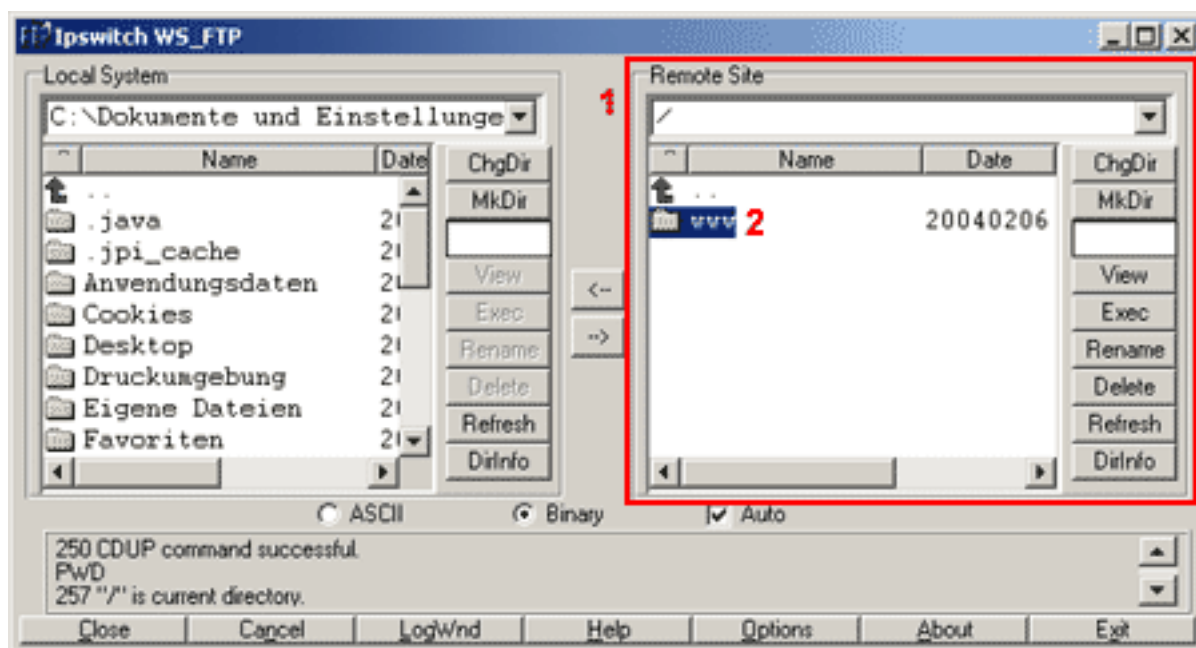
In the field "**User ID**" (4) enter the **Username from the activation mail** (case sensitive!).

In the field "**Password**" (5) enter the **password from the activation mail**.

You should check the "**Save Pwd**" (8) only if you are the only user of the PC.

To establish a connection with this server click "**OK**" (9).

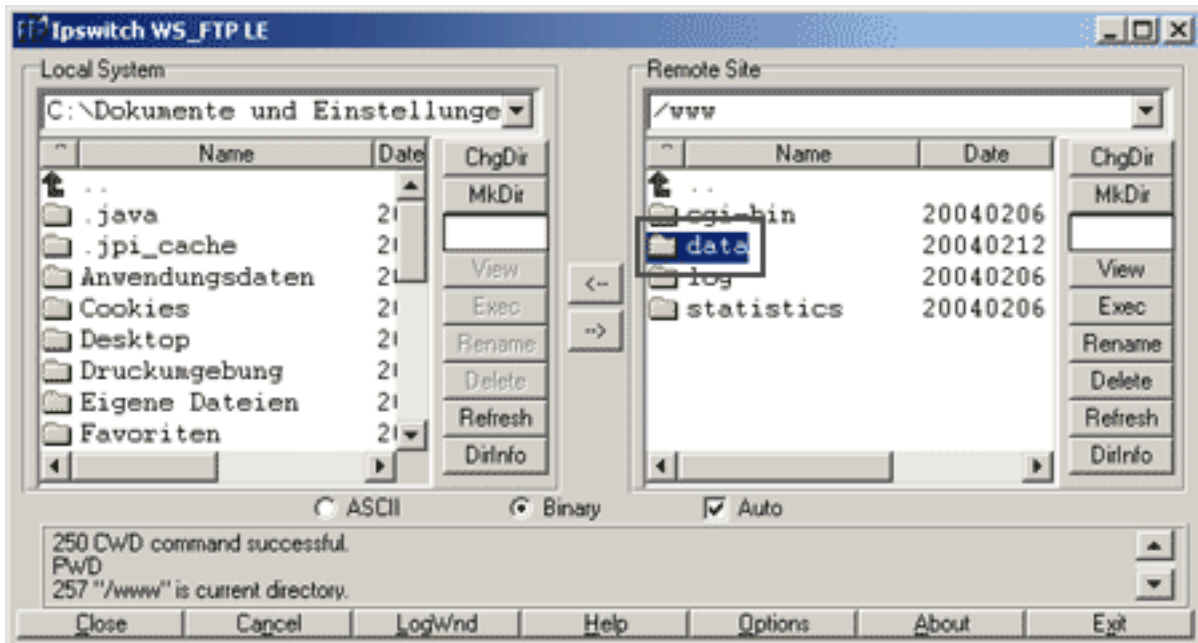
After the successful login the main window looks as follows:



The right side "**Remote Site**" (1) shows the files and folders on the server.

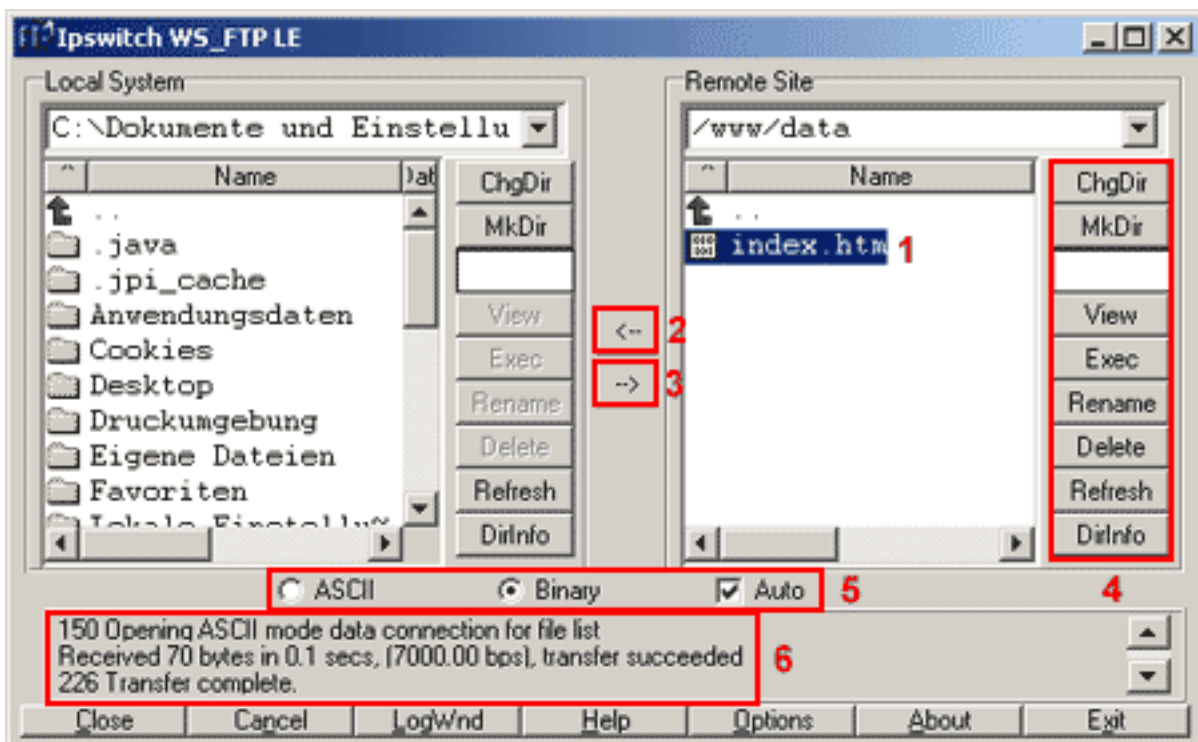
Open the folder "**www**"(2) by double-clicking on it.

Einrichtung FTP-Upload



Now you are in the folder "**www**". There you can see the folders "**cgi-bin**", "**data**", "**log**" and "**statistics**".

Open the folder "**data**" now.



In the directory "**/www/data**" the **Files and Folders(1)** of your website are stored. Before you can copy files into the directory "**/www/data**" you have to select them with the mouse on the left side.

With the button "**<-**" (**2**) you can copy the selected files from the server to the local PC (download), the button

"**->**" (**3**) is used to copy files from the local PC to the server (upload).

You can also copy complete directories by selecting a directory instead of a file.

Einrichtung FTP-Upload

In the button bars **(4)** right to the list boxes all common functions for file editing are included.

The button "**ChgDir**" changes the current directory. "MkDir" creates a new directory.

With the button "**View**" you display text files.

The button "**Rename**" renames a selected file.

The button "**Delete**" deletes a selected file. Directories can only be deleted when they are empty.

The button "**Refresh**" refreshes the window of the list box.

The button "**DirInfo**" provides further information about the files and directories (e.g. permissions etc.).

The radio buttons "**ASCII**" **(5)**, "**Binary**" **(5)** and "**Auto Detect**" **(5)** in the lower part of the main window determine the mode for the file transfer. "**Auto**" **(5)** is recommended here.

success and error messages are displayed in the lower **text field (6)** of the main window.

With "**Cancel**" you can abort a file transfer. "**Close**" ends the current session. After that the button reads "**Connect**" again.

"**Help**" provides the online-documentation in the Windows-hypertext-format.

"**Exit**" ends WS_FTP.

Unique solution ID: #1444

Author: EUserv Kundensupport

Last update: 2012-07-20 13:13